

coesia

ENFLEX, WE HEALTH CARE



Pharma & Healthcare market

- 01
- Serialization and traceability continue to impact the pharmaceutical industry.
- 02
- Digital technology and Internet of Things (IoT) are helping companies connect their machinery to smart devices, troubleshoot and simplify processes.
- 03
- Medical device companies are streamlining their processes and adding more flexible solutions to their operations.
- 04
- Sustainability is a key focus to reduce waste and improve cost efficiency. Flexible packaging is environmentally friendly, with a wide range of recyclable materials.

Why Enflex?

Enflex designs and produces a wide range of sachet machines to package pharmaceutical and nutraceutical products, as well as alcohol wipes, medical swab sticks and other medical devices.

Pharma standards and ease of use: this is Enflex.



Proven know-how: more than 1100 machines and 205 complete lines sold - 127+ billion produced pouches - 540 customers worldwide.



Sustainable ready: all Enflex solutions are ready to work with 100% recyclable & sustainable materials.



Reliable & User-friendly solutions: easy operation and easy access to components for quick maintenance and cleaning.



Healthcare Specialist: we are experts in supplying solutions to the pharmaceutical industry. Let us help you find the right solution for you!

- Pharma documentation always ready: Enflex equipment for the pharmaceutical industry undergoes a qualification process to comply with GMP requirements, thus guaranteeing performance quality and accuracy. We enable QP/RA/FDS/HDS/SDS/DQ/IQ/OQ protocols documentation for our customers.
- Enflex machines fully comply with 21 CFR Part 11
- All Enflex machines feature the optional installation of OCR/OCV cameras and barcode scanners.
- Enflex solutions can be equipped with an independent rejection track for sampling (rejection/sampling).

SOLUTIONS

01

ENFLEX F SERIES

Horizontal Form Fill Seal sachet machines for personal care & healthcare products

02

ENFLEX F-TW SERIES

Horizontal Form Fill Seal sachet machines specially designed for wipes applications

03

ENFLEX F-TC SERIES

Horizontal Form Fill Seal machines specially designed for sachets with top cap

04

ENFLEX PH SERIES

Horizontal Form Fill Seal sachet machines specially designed for pharmaceutical environments

05

ENFLEX PHS SERIES

Vertical Multilane Stickpack machines for pharmaceutical & healthcare applications

06

ENFLEX PHV SERIES

Vertical Multilane Sachet machines for pharmaceutical & healthcare applications

07

ENFLEX PK SERIES

Horizontal Cartoning machines for complete packaging lines

08

DIGITAL & SERVICES

Our comprehensive portfolio of digital solutions, packaging and equipment lifecycle management services

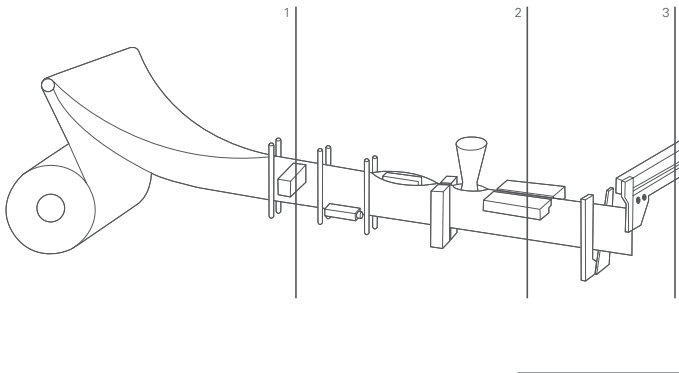
The background of the image shows two industrial machines, identified as ENFLEX F Series Horizontal Form Fill Seal sachet machines. The machines are dark-colored with prominent horizontal rollers. They are processing a material that features a repeating pattern of large, light-colored, curved shapes. The ENFLEX logo is visible on the material. The text is overlaid on the left side of the image in a white, bold, sans-serif font.

ENFLEX F SERIES:

**Horizontal Form Fill
Seal sachet machines
for personal care &
healthcare products**

F-11

Horizontal Form-Fill-Seal (HFFS) machine for sachets, operating from a single reel of flexible packaging material, forming the pouch, filling it with product, and sealing.

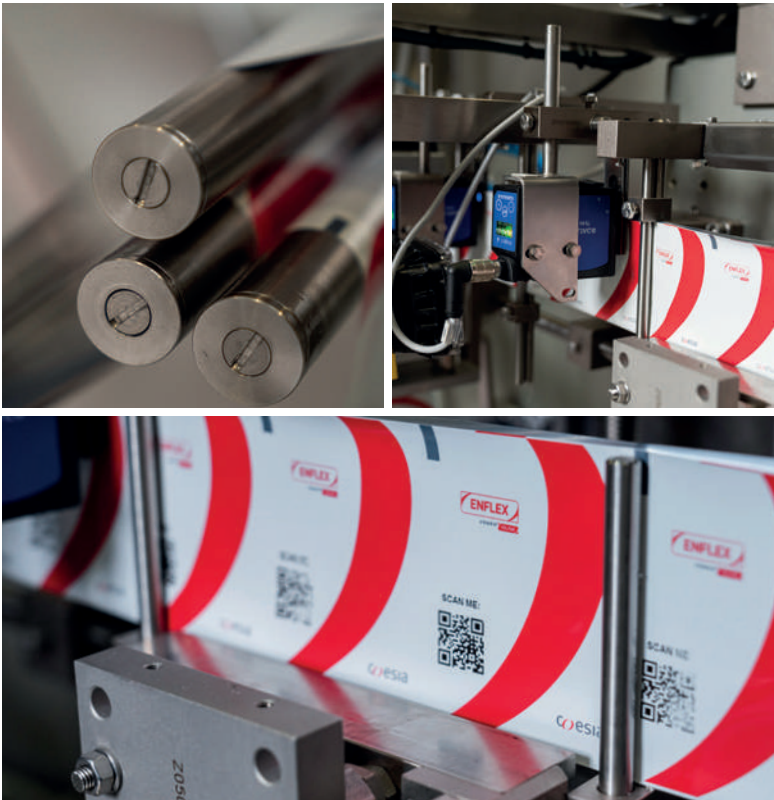


1. Unwinding and folding 2. Forming and filling 3. Cutting and exit



01 Machine Highlights

- Simplex or duplex operation
- Smart HMI, easy and intuitive
- Reduced footprint
- Low operating and maintenance costs
- Wide variety of sachet formats available (3- or 4-side sealed sachets, twin sachets, strings of sachets, shaped sachets...)
- Ready to work with 100% recyclable materials



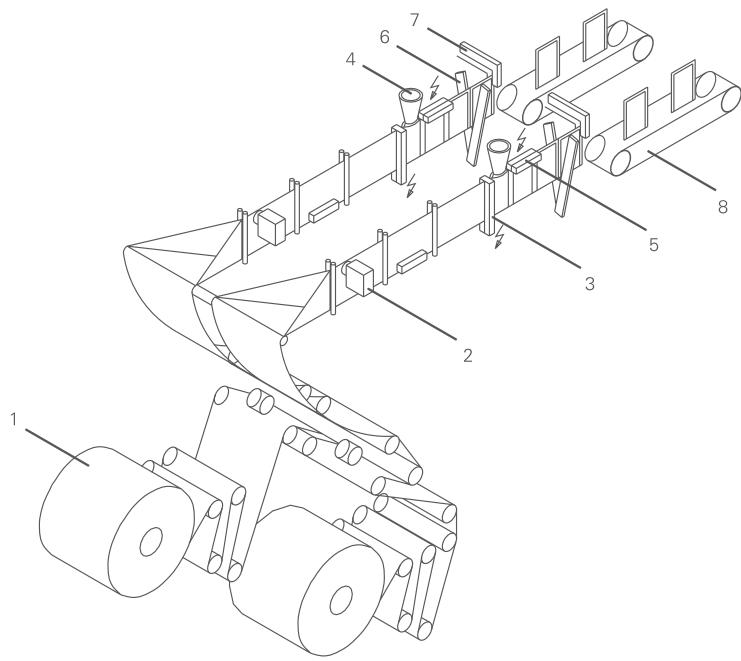
02 Technical specification

		SIMPLEX	DUPLEX
Min pouch size, W x H	mm	40 x 40	40 x 40
Max pouch size, W x H	mm	110 x 130	70 x 130
Max pouch volume	c.c	60	30
Max output	ppm	90	180
Type of material		Heatsealable	
Max reel width	mm	260	
Max reel diameter	mm	450	
Core reel diameter	mm	70- 75	
Consumption	kW	3,7	4,2
Electrical data		200- 480 V / 50, 60 Hz / 3Ph + G	
Machine dimensions, L x A x H	mm	2140 x 930 x 1800	
Net weight	kg	680	780

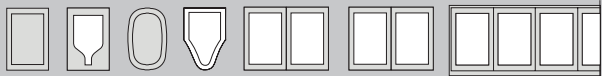


F-11W

Horizontal Form-Fill-Seal (HFFS) machine for sachets produced simultaneously on two lines, operating from two reels of flexible material, forming the pouches, filling them with product, and sealing.



1. Reel 2. Photocell 3. Vertical seal 4. Filling 5. Top seal 6. Scissors 7. Film draw 8. Discharge belt



01 Machine Highlights

- Simplex operation
- Smart HMI, easy and intuitive
- Ideal for high productions of single SKUs
- Reduced footprint
- Low operating and maintenance costs
- Ready to work with 100% recyclable materials



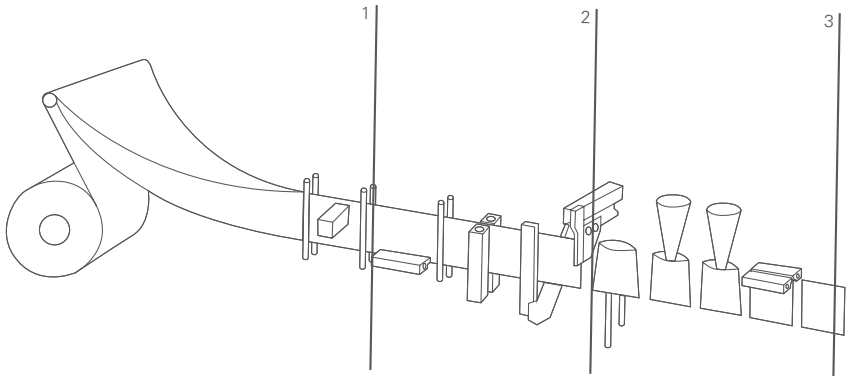
02 Technical data

		SIMPLEX	DUPLEX
Min pouch size, W x H	mm	40 x 40	40 x 40
Max pouch size, W x H	mm	110 x 130	70 x 130
Max pouch volume	c.c	60	30
Max output	ppm	180	360
Type of material		Heatsealable	
Max reel width	mm	260	
Max reel diameter	mm	450	
Core reel diameter	mm	70- 75	
Consumption	kW	3,7	8,4
Electrical data		200- 480 V / 50, 60 Hz / 3Ph + G	
Machine dimensions, L x A x H	mm	2520 x 1230 x 1800	
Net weight	kg	800	900

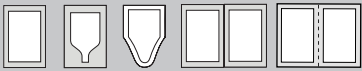


F-14

Horizontal Form-Fill-Seal (HFFS) machine for sachets, operating from a single reel of flexible packaging material, forming the pouch, filling it with product, and sealing.



1. Unwinding and folding 2. Forming and cutting 3. Opening, filling and sealing



01 Machine Highlights

- Simplex or duplex operation
- Smart HMI, easy and intuitive
- Two dosing systems can be installed simultaneously
- Numeric counters for easy size change
- Low operating and maintenance costs
- Wide variety of sachet formats available (3- or 4-side sealed sachets, twin sachets, strings of sachets, shaped sachets...)
- Ready to work with 100% recyclable materials



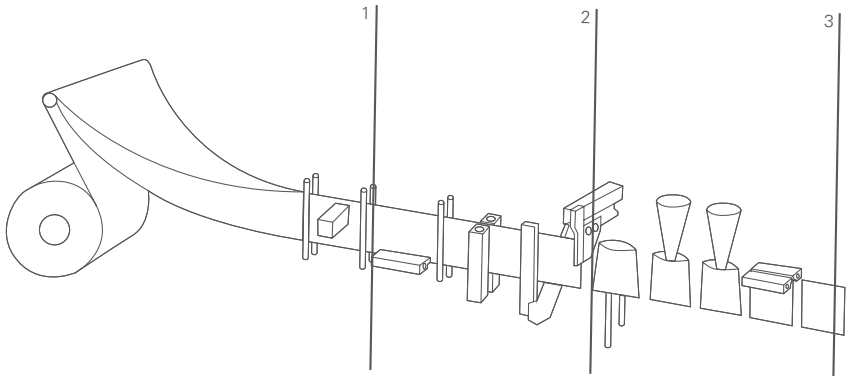
02 Technical data

		SIMPLEX	DUPLEX
Min pouch size, W x H	mm	50 x 70	50 x 70
Max pouch size, W x H	mm	140 x 200	70 x 200
Max pouch volume	c.c	300	50
Max output	ppm	90	180
Type of material	Heatsealable		
Max reel width	mm	400	
Max reel diameter	mm	500	
Core reel diameter	mm	70- 75	
Electrical data	200- 480 V / 50, 60 Hz / 3Ph + G		



F-17

Horizontal Form-Fill-Seal (HFFS) machine for sachets, operating from a single reel of flexible packaging material, forming the pouch, filling it with product, and sealing.

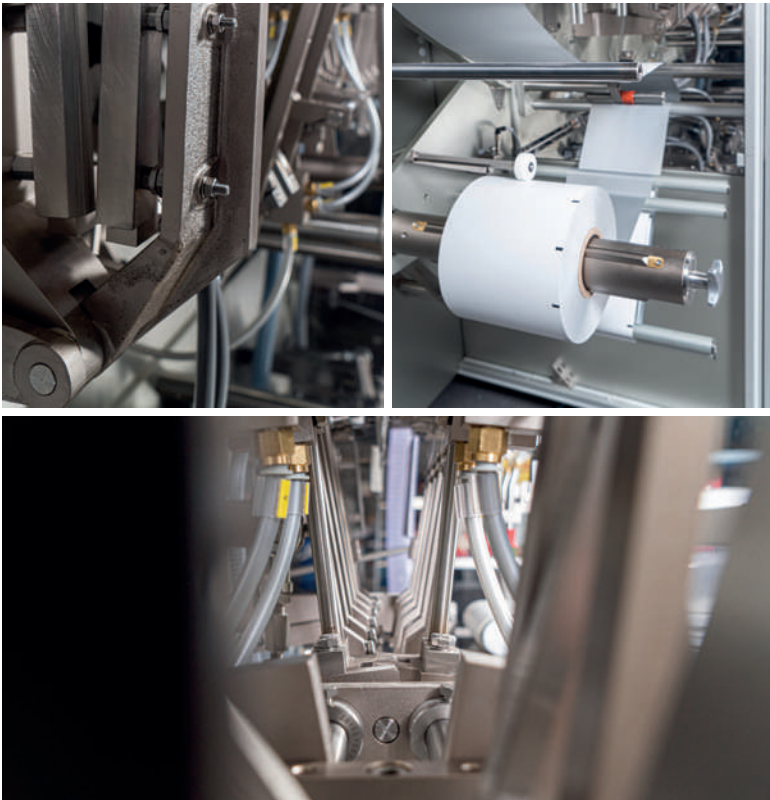


1. Unwinding and folding 2. Forming and cutting 3. Opening, filling and sealing



01 Machine Highlights

- Simplex or duplex operation
- Smart HMI, easy and intuitive
- Two dosing systems can be installed simultaneously
- Space to include additional equipment, such as cameras, printers, labelers...
- Numeric counters for easy size change
- Low operating and maintenance costs
- Wide variety of sachet formats available (3- or 4-side sealed sachets, twin sachets, shaped sachets...)
- Ready to work with 100% recyclable materials



02 Technical data

		SIMPLEX	DUPLEX
Min pouch size, W x H	mm	50 x 70	50 x 70
Max pouch size, W x H	mm	190 x 225	90 x 225
Max pouch volume	c.c	500	90
Max output	ppm	90	180
Type of material		Heatsealable	
Max reel width	mm	450	
Max reel diameter	mm	500	
Core reel diameter	mm	70- 75	
Electrical data		200- 480 V / 50, 60 Hz / 3Ph + G	



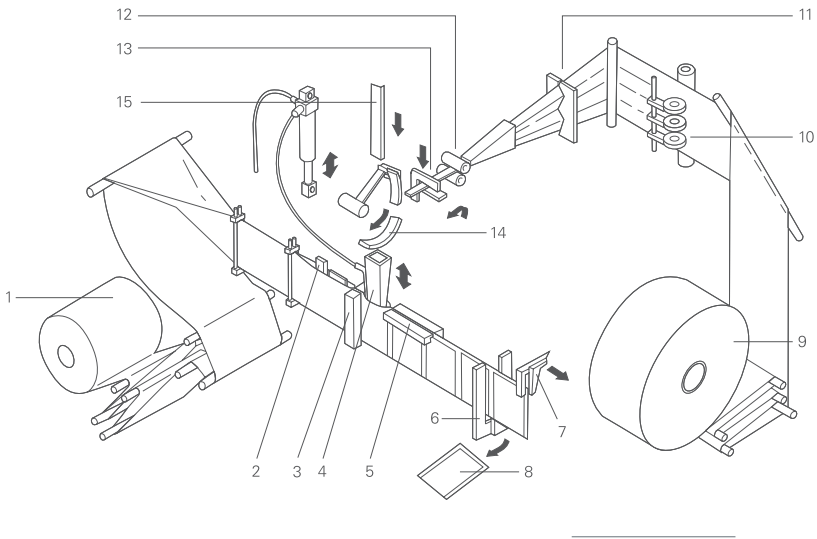


ENFLEX F-TW SERIES:

**Horizontal Form Fill
Seal sachet machines
specially designed for
wipes applications**

F-11 TW

Horizontal Form-Fill-Seal (HFFS) machine for wipes in sachets, operating from a reel of flexible packaging material, forming the sachet, filling it with reel-fed wipes, and sealing.

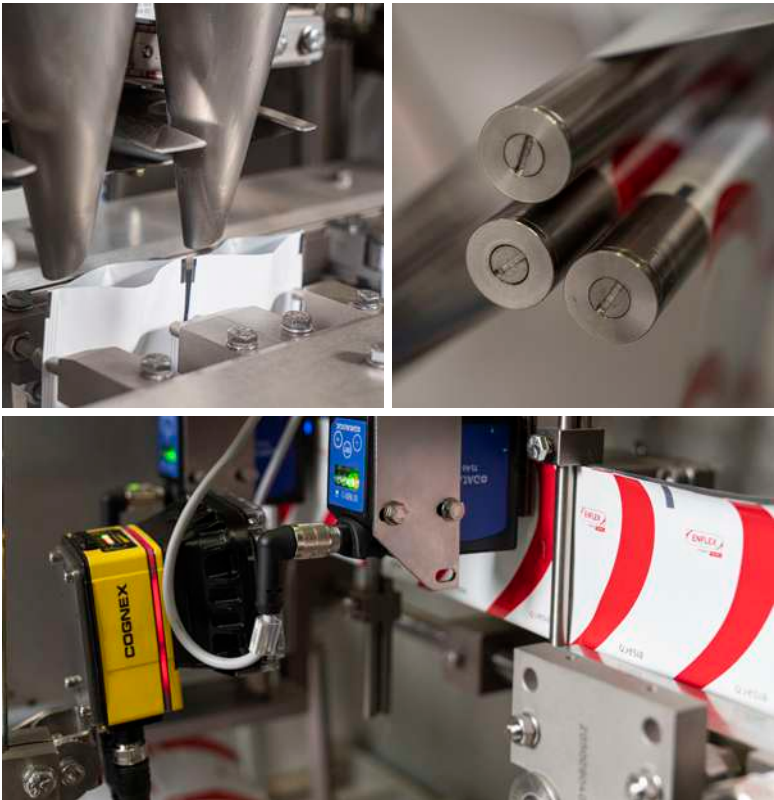


1. Reel 2. Pouch opener 3. Vertical sealer 4. Towellette and liquid dosing 5. Top sealer 6. Scissors 7. Film draw 8. Exit 9. Towellette reel 10. Towellette creasing 11. Towellette folding 12. Towellette drive 13. Towellette scissors 14. Towellette folding 15. Towellette inserter








01 Machine Highlights

- Wipe feeder designed for woven and non-woven tissues
- Simplex or duplex operation
- Smart HMI, easy and intuitive
- Reduced footprint
- Low operating and maintenance costs
- Wide variety of sachet formats available (3- or 4-side sealed sachets, twin sachets, strings of sachets...)
- Ready to work with 100% recyclable materials



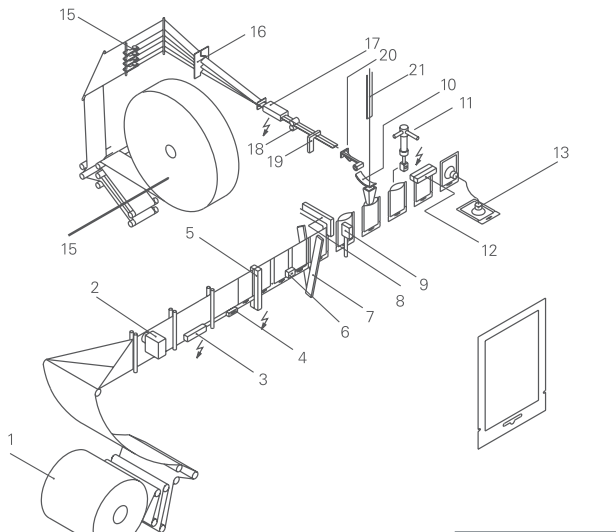
02 Technical data

		SIMPLEX		DUPLEX	
Min pouch size, W x H	mm	40 x 40		40 x 40	
Max pouch size, W x H	mm	110 x 130		70 x 130	
Max pouch volume	c.c	10		10	
Max output	ppm	90		180	
Type of material	Heatsealable				
Max reel width	mm	260			
Max reel diameter	mm	450			
Core reel diameter	mm	70- 75			
Towelette folding type		2-fold 	3-fold 	4-fold 	
Min towelette size, unfolded, W x H	mm	60 x 102	60 x 102	60 x 160	
Max towelette size, unfolded, W x H	mm	300x190	300x240	300x240	
Min / Max towelette width, folded	mm	 17/60		 17/40	
Max towelette reel diameter	mm	1000			
Consumption	kW	3,4		4,4	
Electrical data	200- 480 V / 50, 60 Hz / 3Ph + G				
Machine dimensions, L x A x H	mm	2160 x 2200 x 1800			
Net weight	kg	770			

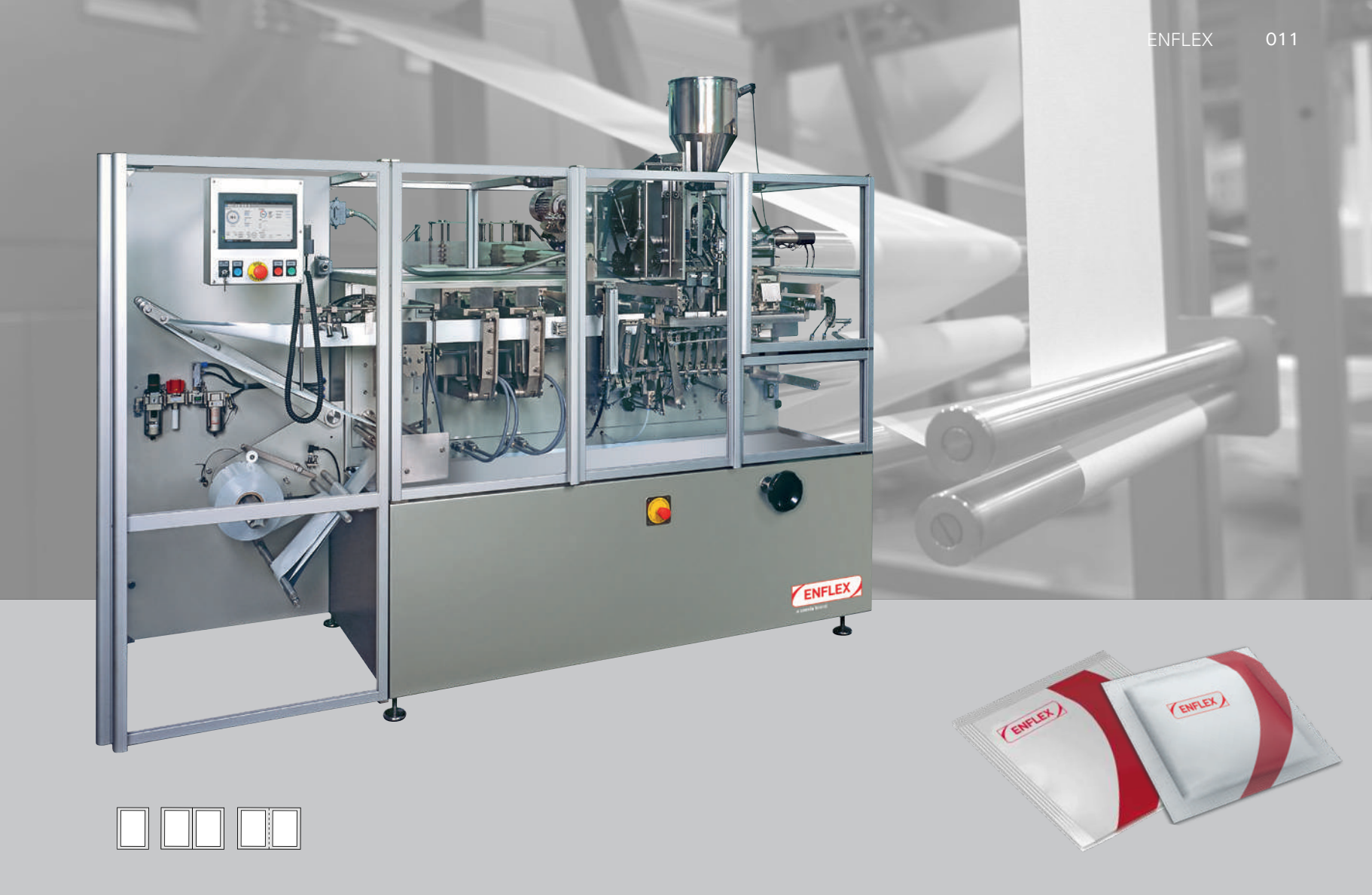


F-14 TW

Horizontal Form-Fill-Seal (HFFS) machine for wipes in sachets, operating from a reel of flexible packaging material, forming the sachet, filling it with reel-fed wipes, and sealing.

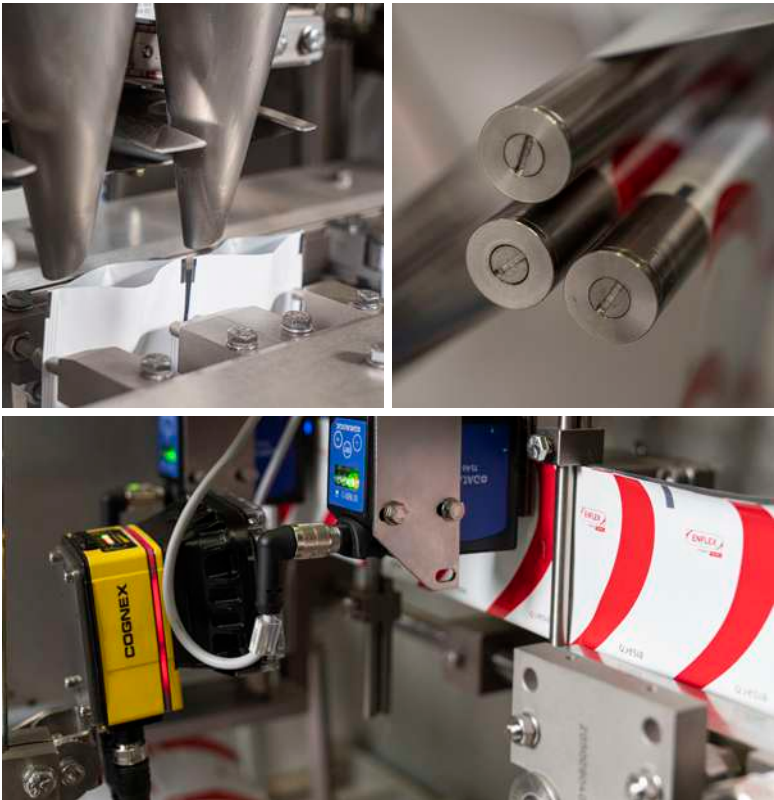


1. Reel 2. Photocell 3. Bottom Sealer 4. Eurohole Perforator 5. Vertical sealer 6. Tear notch 7. Scissors 8. Film draw 9. Suction cups 10. Towelette 11. Liquid dosing 12. Top sealer 13. Pick & place exit 14. Towelette reel 15. Towelette creasing 16. Towelette folding 17. Towelette heating & flattener 18. Towelette drive 19. Towelette scissors 20. Towelette folding 21. Towelette inserter








01 Machine Highlights

- Wipe feeder designed for woven and non-woven tissues
- Simplex or duplex operation
- Smart HMI, easy and intuitive
- Servo-driven motion for enhanced flexibility
- Space to install a second dosing system for products such as shampoos and creams
- Numeric counters for easy size change
- Low operating and maintenance costs
- Wide variety of sachet formats available (3- or 4-side sealed sachets, twin sachets...)
- Ready to work with 100% recyclable materials



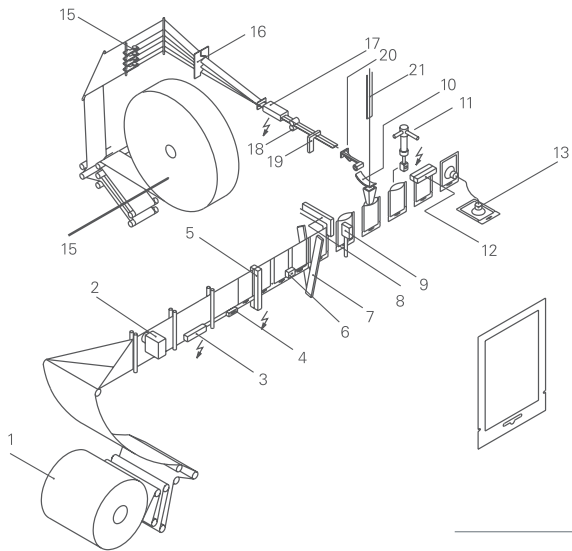
02 Technical data

		SIMPLEX		DUPLEX	
Min pouch size, W x H	mm	50 x 70		50 x 70	
Max pouch size, W x H	mm	140 x 200		70 x 200	
Max pouch volume	c.c	10		10	
Max output	ppm	90		180	
Type of material	Heatsealable				
Max reel width	mm	450			
Max reel diameter	mm	500			
Core reel diameter	mm	70- 75			
Towelette folding type		2-fold 	3-fold 	4-fold 	
Min towelette size, unfolded, W x H	mm	60 x 110	60 x 110	60 x 100	
Max towelette size, unfolded, W x H	mm	300x240	300x300	300x200	
Min / Max towelette width, folded	mm	 17/70	 17/40		
Max towelette reel diameter	mm	1000			
Consumption	kW	3,4		4,4	
Electrical data	200- 480 V / 50, 60 Hz / 3Ph + G				

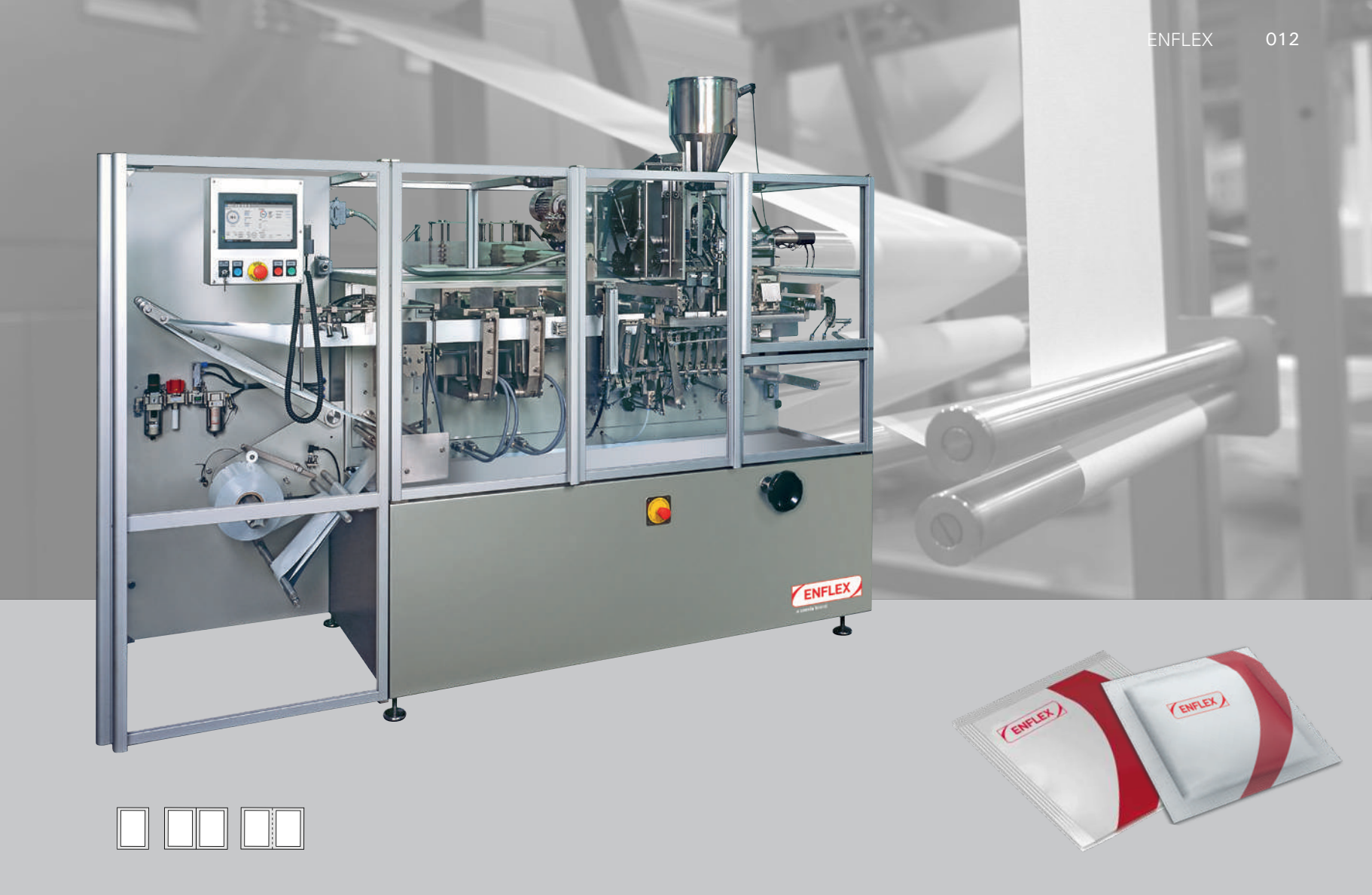


F-17 TW

Horizontal Form-Fill-Seal (HFFS) machine for wipes in sachets, operating from a reel of flexible packaging material, forming the sachet, filling it with reel-fed wipes, and sealing.



1. Reel 2. Photocell 3. Bottom Sealer 4. Eurohole Perforator 5. Vertical sealer 6. Tear notch 7. Scissors 8. Film draw 9. Suction cups 10. Towelette reel 11. Liquid dosing 12. Top sealer 13. Pick & place exit 14. Towelette reel 15. Towelette creasing 16. Towelette folding 17. Towelette heating 18. Liquid drive& flattener 19. Towelette scissors 20. Towelette folding 21. Towelette inserter



01 Machine Highlights

- Wipe feeder designed for woven and non-woven tissues
- Simplex or duplex operation
- Smart HMI, easy and intuitive
- Servo-driven motion for enhanced flexibility
- Space to install a second dosing system for products (shampoos, creams...) or additional equipment (cameras, printers, labelers)
- Numeric counters for easy size change
- Low operating and maintenance costs
- Wide variety of sachet formats available (3- or 4-side sealed sachets, twin sachets...)
- Ready to work with 100% recyclable materials



02 Technical data

		SIMPLEX	DUPLEX
Min pouch size, W x H	mm	50 x 70	50 x 70
Max pouch size, W x H	mm	190 x 225	90 x 225
Max pouch volume	c.c	10	10
Max output	ppm	90	180
Type of material	Heatsealable		
Max reel width	mm	450	
Max reel diameter	mm	500	
Core reel diameter	mm	70- 75	
Towelette folding type		2-fold	3-fold 4-fold
Min towelette size, unfolded, W x H	mm	60 x 110	60 x 110 60 x 100
Max towelette size, unfolded, W x H	mm	300x240	300x300 300x200
Min / Max towelette width, folded	mm	17/70	17/40
Max towelette reel diameter	mm	1000	
Consumption	kW	3,4	4,4
Electrical data	200- 480 V / 50, 60 Hz / 3Ph + G		



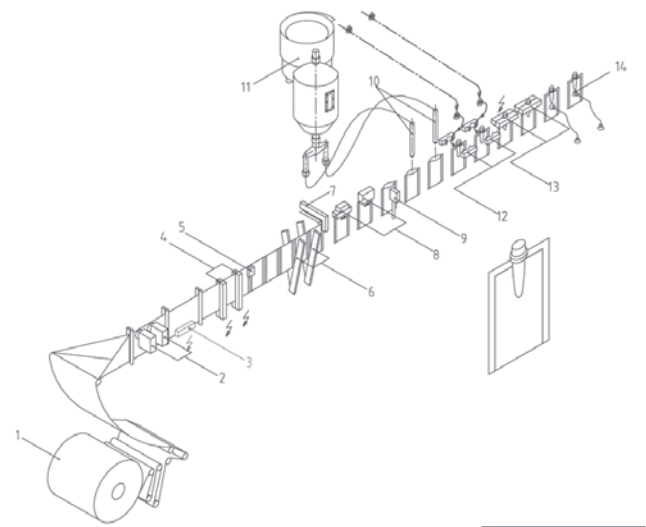
ENFLEX F-TC SERIES:

Horizontal Form
Fill Seal machines
specially designed for
sachets with top cap

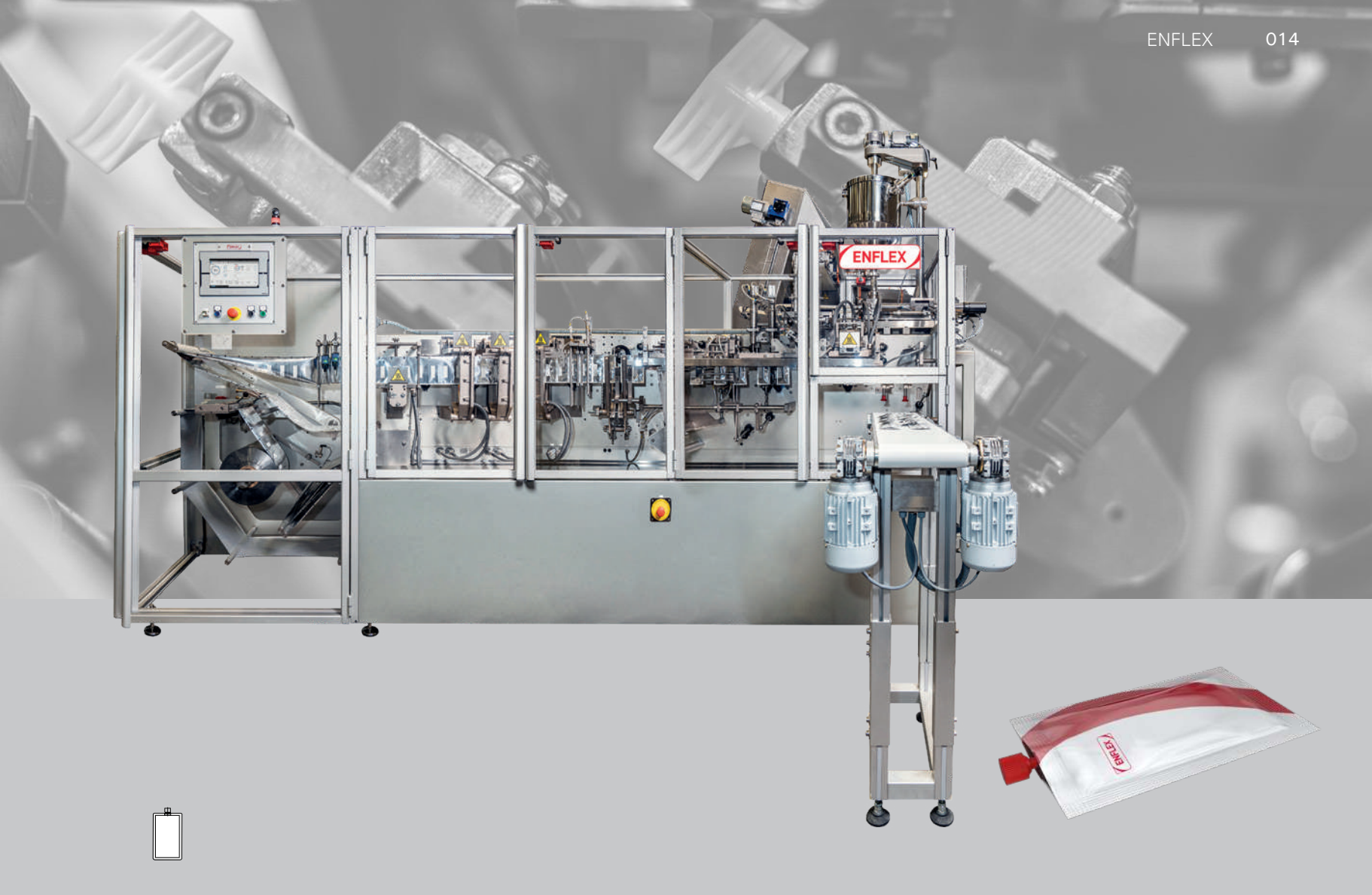


F-17 DX-TC

Horizontal Form-Fill-Seal (HFFS) machine for sachets with top cap, operating from a single reel of flexible packaging material, forming the pouch, filling it with product, adding the cap, and sealing.

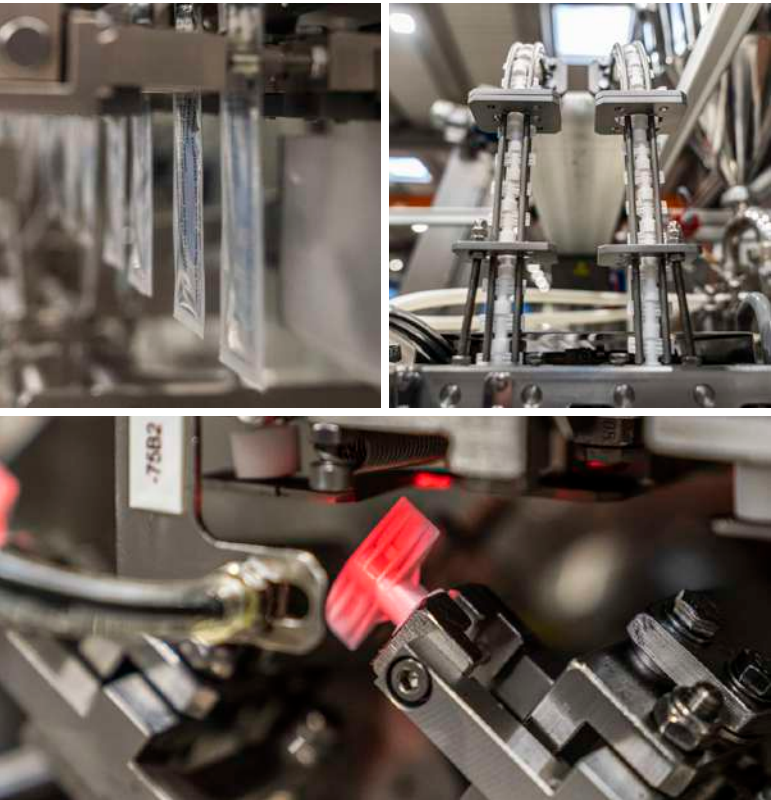


1. Reel 2. Photocell 3. Bottom seal 4. Vertical seal 5. Emboss coding 6. Pouch cutting 7. Film drive 8. Pouch positioner 9. Opening 10. Filling 11. Cap feeder 12. Cap insertion and seal 13. Top seal 14. Pick and place exit



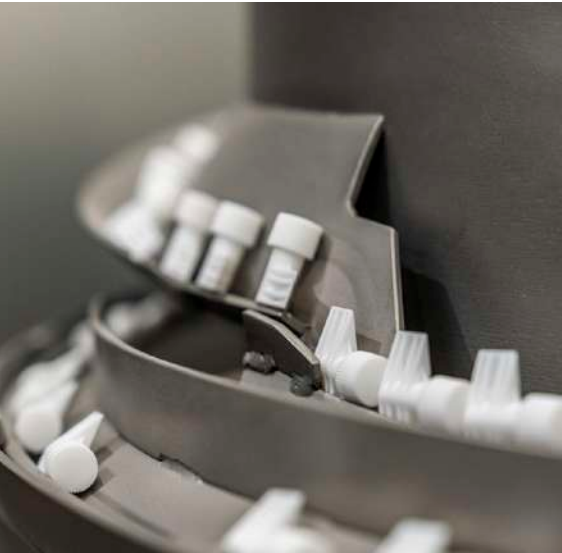
01 Machine Highlights

- Duplex operation
- Smart HMI, easy and intuitive
- Top cap applicator including caps unscrambler and feeder
- Space to include additional equipment, such as cameras, printers, labelers...
- Low operating and maintenance costs
- 3- or 4-side sealed top cap sachets



02 Technical data

DUPLEX		
Min pouch size, W x H	mm	50 x 70
Max pouch size, W x H	mm	90 x 225
Max pouch volume	c.c	90
Max output	ppm	150
Type of material	Heatsealable	
Max reel width	mm	450
Max reel diameter	mm	500
Core reel diameter	mm	70- 75
Electrical data	200- 480 V / 50, 60 Hz / 3Ph + G	



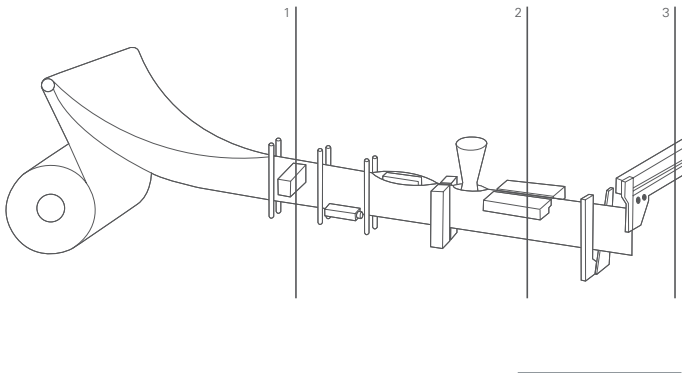


ENFLEX PH SERIES:

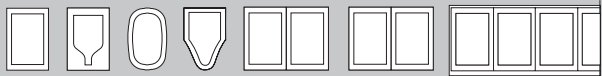
**Horizontal Form Fill
Seal sachet machines
specially designed
for pharmaceutical
environments**

PH-11

Horizontal Form-Fill-Seal (HFFS) machine for pharma products in sachets, operating from a single reel of flexible packaging material, forming the pouch, filling it with product, and sealing.

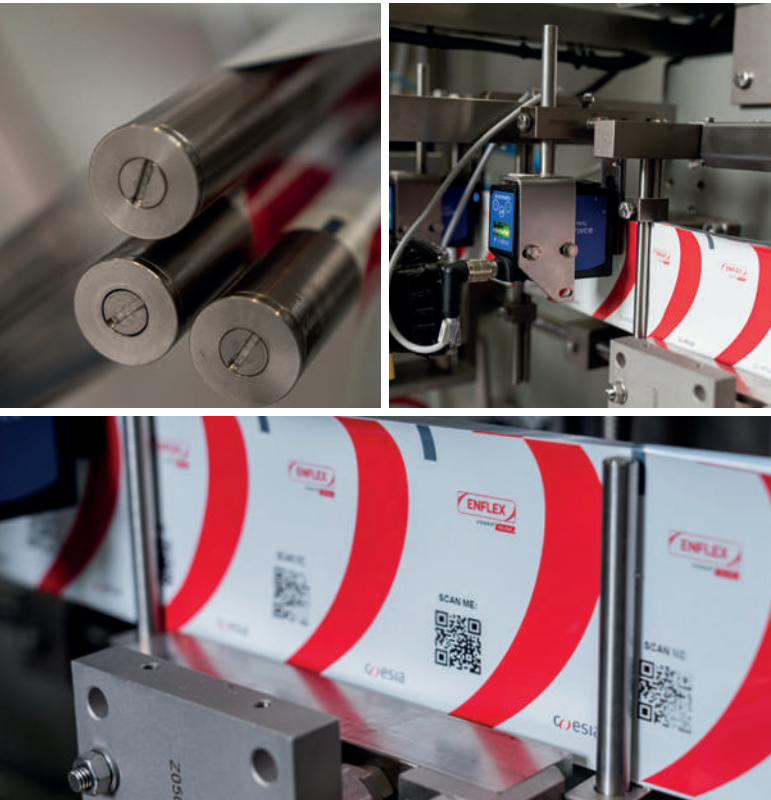


1. Unwinding and folding 2. Forming and filling 3. Cutting and exit



01 Machine Highlights

- Simplex or duplex operation
- Smart HMI, easy and intuitive
- Reduced footprint
- Hygienic auger filler (GMP compliant)
- Compliant to 21 CFR Part 11 requirements
- Space to allocate Track & Trace systems, coders, cameras...
- Low operating and maintenance costs
- Wide variety of sachet formats available (3- or 4-side sealed sachets, twin sachets, strings of sachets...)
- Ready to work with 100% recyclable materials



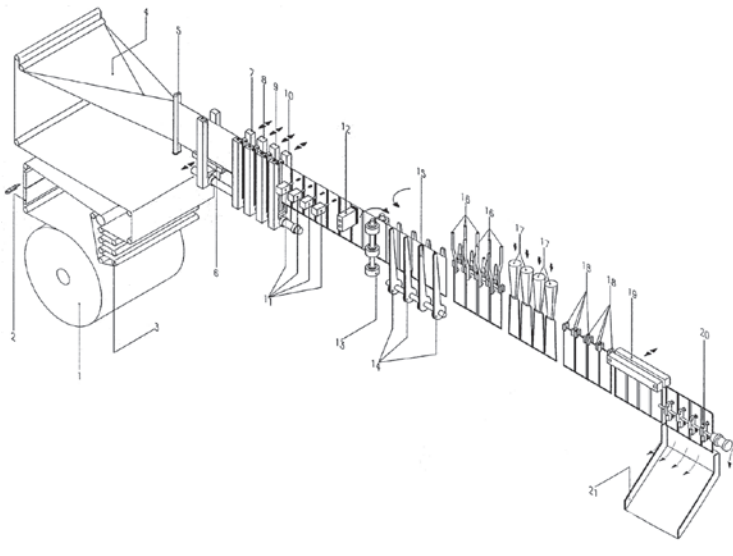
02 Technical data

		SIMPLEX	DUPLEX
Min pouch size, W x H	mm	40 x 40	40 x 40
Max pouch size, W x H	mm	110 x 130	70 x 130
Dosing range, min- max	c.c	0,4- 40	0,4- 30
Max output	ppm	90	180
Type of material		Heatsealable	
Max reel width	mm	260	
Max reel diameter	mm	450	
Core reel diameter	mm	70- 75	
Electrical data		200- 480 V / 50, 60 Hz / 3Ph + G	
Machine dimensions, L x A x H	mm	2520 x 1060 x 1850	



PH-28

Horizontal Form-Fill-Seal (HFFS) machine for pharma products in sachets, operating from a single reel of flexible packaging material, forming the pouch, filling it with product, and sealing.



1. Reel 2. Splicing table 3. Unwinder 4. Film folder 5. Film guides 6. Bottom seal 7. 1st vertical seal 8. 2nd vertical seal 9. 3rd vertical seal 10. 4th vertical seal 11. Tear notch 12. Photocell 13. Servo rollers for film transport 14. Knife 15. Knife 16. Pouch opening 17. Filling station 18. Pouch stretcher 19. Top sealing 20. Pick & Place discharge transfer 21. Reject ramp



01 Machine Highlights

- Triplex or quadruplex operation
- Hygienic auger filler (GMP compliant)
- Pouch forming area separated from filling area
- Smart HMI
- Compliant to 21 CFR Part 11 requirements
- Space to allocate Track & Trace systems, coders, cameras...
- Optimized footprint
- Wide variety of sachet formats available (3- or 4-side sealed sachets, twin sachets...)
- Ready to work with 100% recyclable materials



02 Technical data

		TRIPLEX	QUADRUPLEX
Min pouch size, W x H	mm	45 x 50	45 x 50
Max pouch size, W x H	mm	93 x 240	70 x 240
Dosing range, min- max	c.c	150	80
Max output	ppm	270	360
Type of material		Heatsealable	
Max reel width	mm	480	
Max reel diameter	mm	600	
Core reel diameter	mm	74- 78	
Electrical data		200- 480 V / 50, 60 Hz / 3Ph + G	
Machine dimensions, L x A x H	mm	5000 x 1200 x 1800	
Net weight	kg	5500	



ENFLEX PHS SERIES:

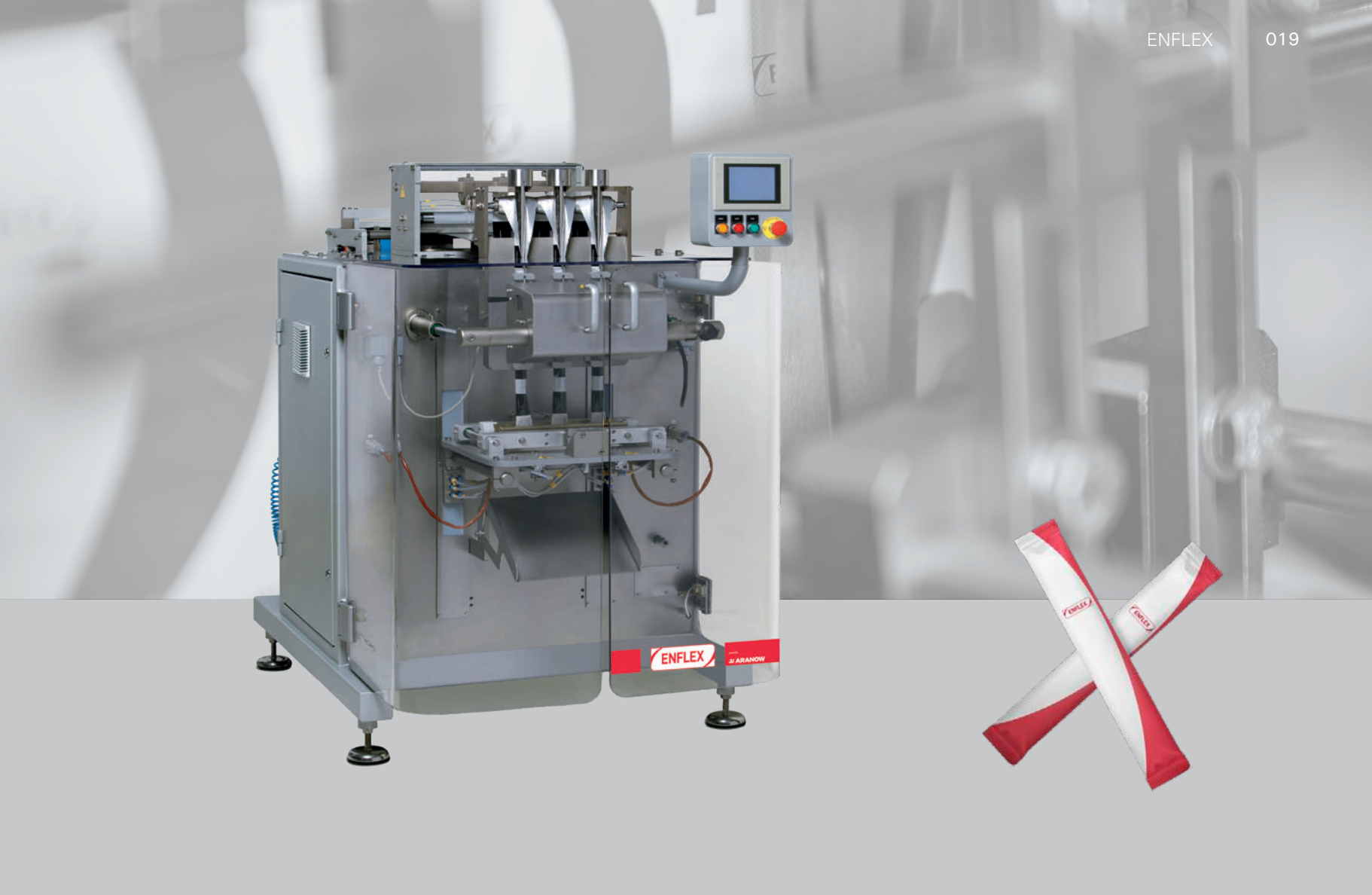
**Vertical Multilane
Stickpack machines
for pharmaceutical &
healthcare applications**

03.04.1.020.06

03.04.1.020.06

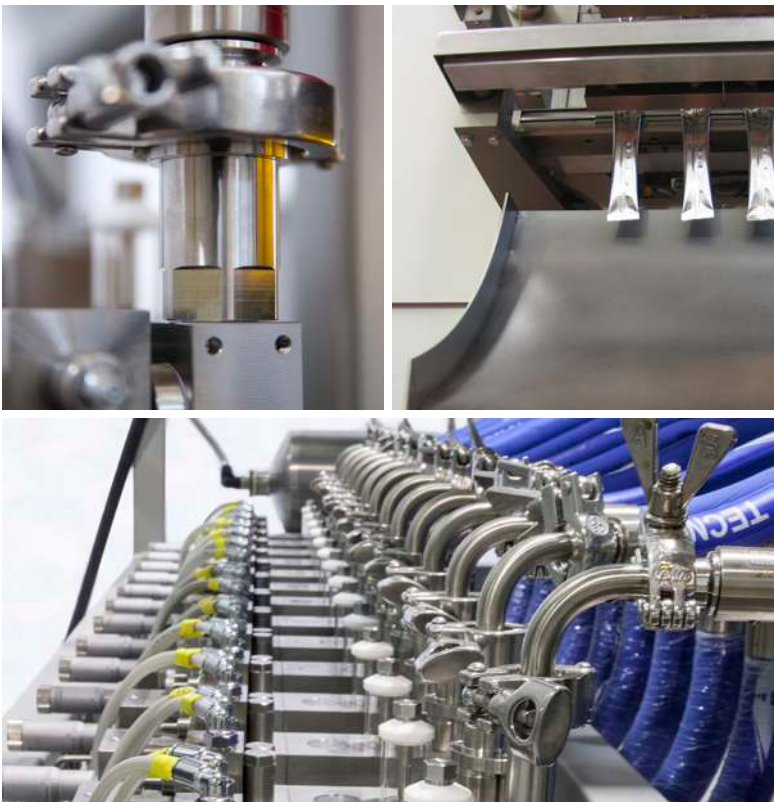
PHS-30

Vertical Form-Fill-Seal machine for stick packs, operating from a single reel of flexible packaging material, forming the stick packs in multiple lanes, filling them with product, and sealing.



01 Machine Highlights

- From 1 to 5 lanes
- Smart HMI, multiple recipes
- Easy access for cleaning and maintenance
- Ideal for pharmaceutical products tests and sampling
- Compliance with GMP and 21 CFR Part 11 standards
- Servo-driven motion
- Quick and easy changeover
- Low maintenance costs
- Wide variety of stick packs formats available (lap seal, fin seal, shaped stick, twinpack, 3-side seal, side seal, string)



02 Technical data

PHS-30		
Maximum reel width	mm	300
Track number		1 - 4
Widht range	mm	14 - 80
Maxlength*	mm	160
Core reel diameter	mm	70
Max reel diameter	mm	450
Max output	ppm	300
Consumption	kW	3
Air consumption	NI/min	180



PHS-65

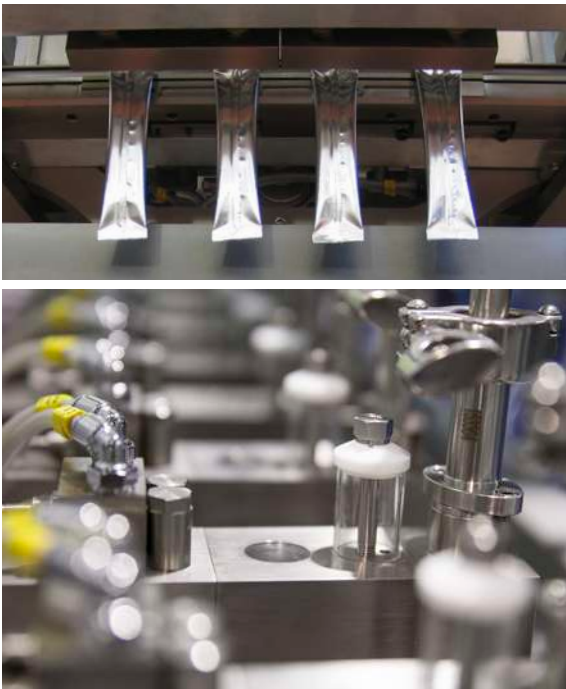
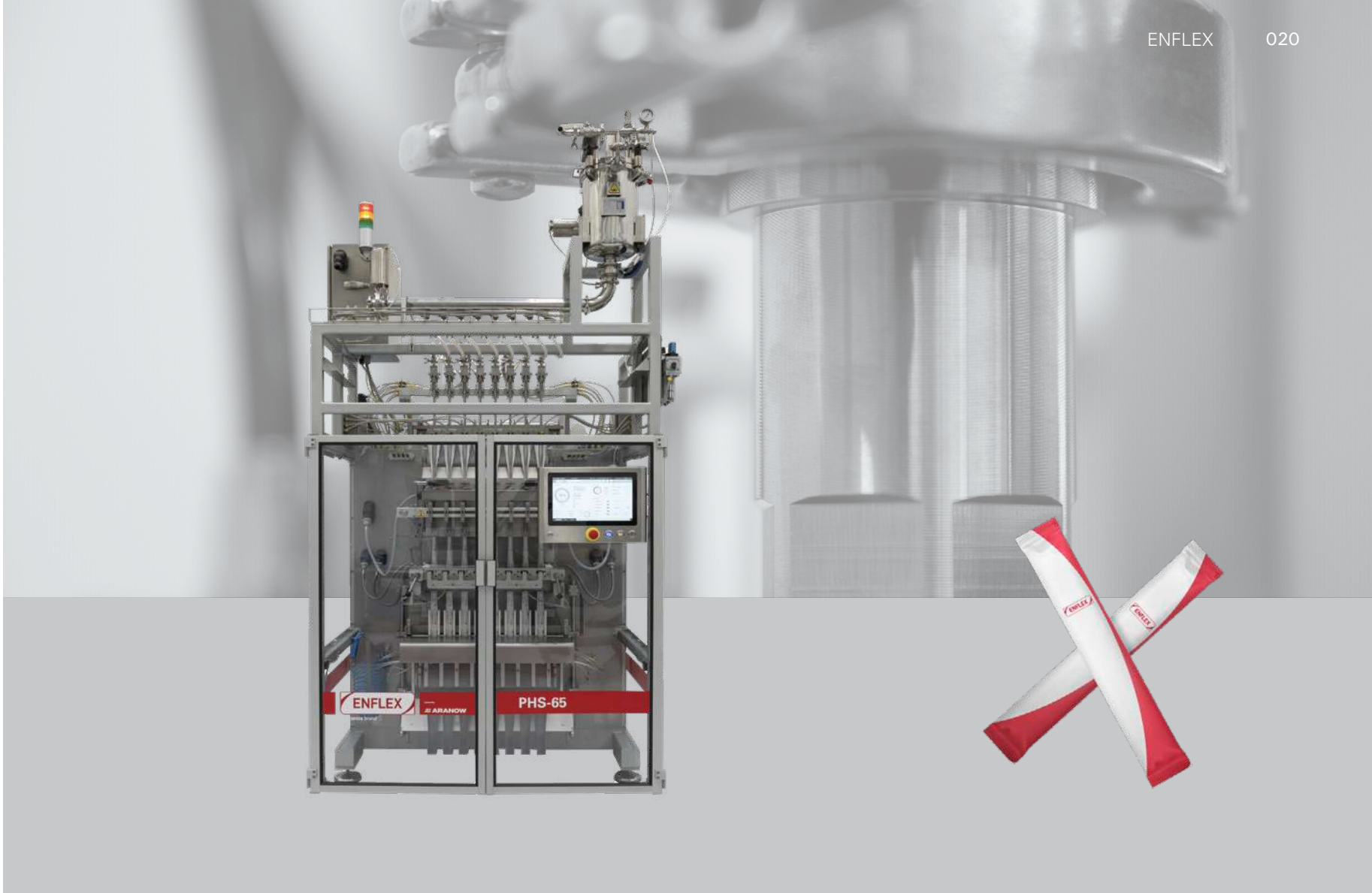
Vertical Form-Fill-Seal machine for stick packs, operating from a single reel of flexible packaging material, forming the stick packs in multiple lanes, filling them with product, and sealing.

01 Machine Highlights

- From 4 to 16 lanes
- Smart HMI, multiple recipes
- Easy access for cleaning and maintenance
- Space to allocate Track & Trace systems, printers, cameras...
- Rejection per independent track for sampling (rejection/sampling)
- Compliance with GMP and 21 CFR Part 11 standards
- Servo-driven motion
- Quick and easy changeover
- Low maintenance costs
- Wide variety of stick packs formats available (lap seal, fin seal, shaped stick, twinpack, 3-side seal, side seal, string)

02 Technical data

		PHS-65
Maximum reel width	mm	650
Track number		4- 16
Widht range	mm	17- 80
Maxlength*	mm	180
Core reel diameter	mm	70
Max reel diameter	mm	450
Max output	ppm	1200
Consumption	kW	5
Air consumption	NI/min	220



PHS-100

Vertical Form-Fill-Seal machine for stick packs, operating from a single reel of flexible packaging material, forming the stick packs in multiple lanes, filling them with product, and sealing.

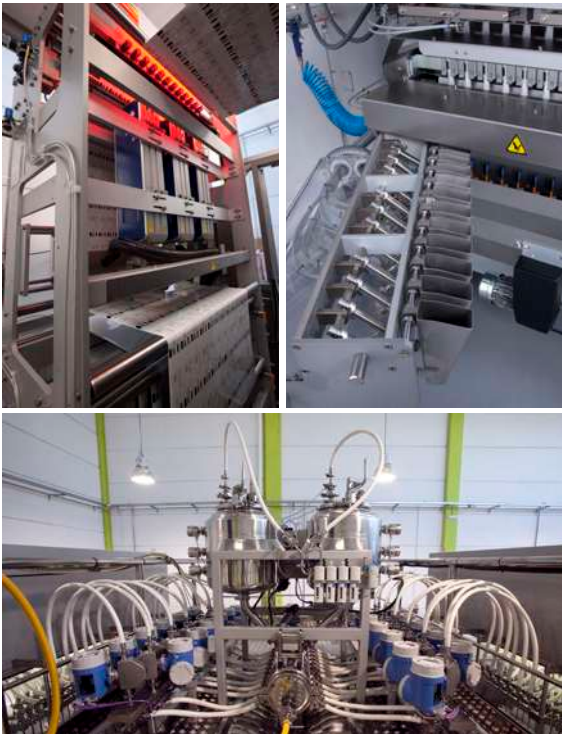


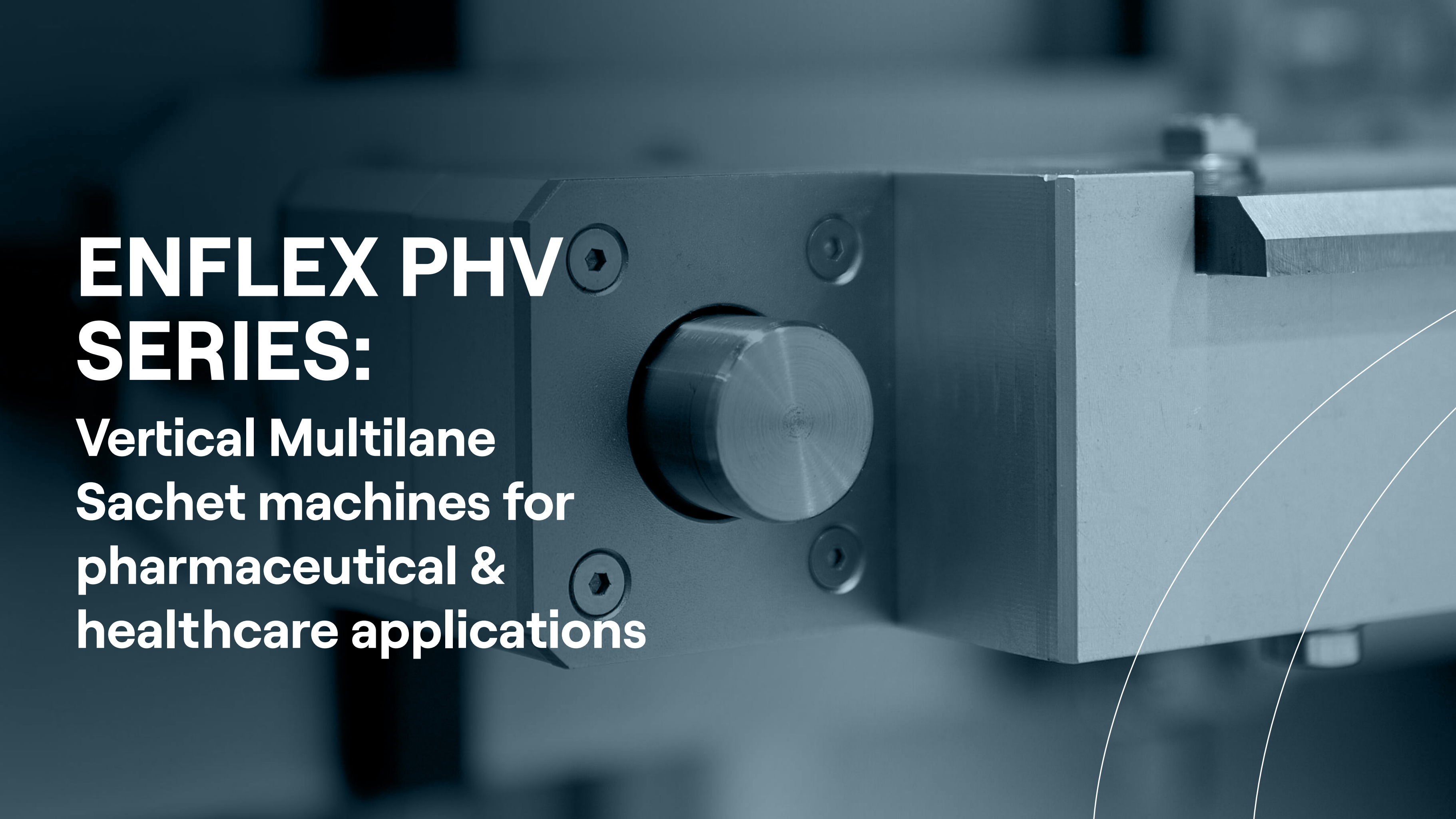
01 Machine Highlights

- From 4 to 24 lanes
- Smart HMI, multiple recipes
- Easy access for cleaning and maintenance
- Space to allocate Track & Trace systems, printers, cameras...
- Rejection per independent track for sampling (rejection/sampling)
- Compliance with GMP and 21 CFR Part 11 standards
- Servo-driven motion
- Quick and easy changeover
- Low maintenance costs
- Wide variety of stick packs formats available (lap seal, fin seal, shaped stick, twinpack, 3-side seal, side seal, string)

02 Technical data

PHS-100		
Maximum reel width	mm	1000
Track number		4- 24
Widht range	mm	17- 80
Maxlength*	mm	180
Core reel diameter	mm	150
Max reel diameter	mm	500
Max output	ppm	1800
Consumption	kW	5
Air consumption	NI/min	220



A close-up photograph of a dark, industrial metal component, likely part of a machine. The component features a central circular knob with a brushed metal finish. Four screws are visible, securing the component. The background is blurred, showing more of the machine's structure.

ENFLEX PHV SERIES:

**Vertical Multilane
Sachet machines for
pharmaceutical &
healthcare applications**

PHV-65

Vertical Form-Fill-Seal machine for sachets, operating from a single reel of flexible packaging material, forming the sachets in multiple lanes, filling them with product, and sealing.



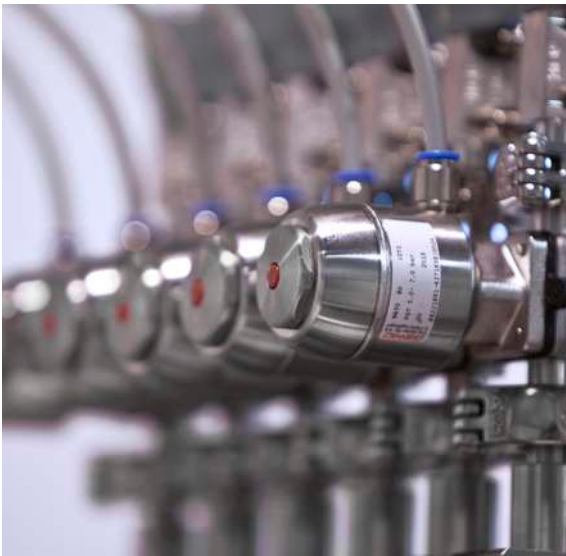
01 Machine Highlights

- From 2 to 9 lanes
- Smart HMI, multiple recipes
- Easy access for cleaning and maintenance
- Space to allocate Track & Trace systems, printers, cameras...
- Rejection per independent track for sampling (rejection/ sampling)
- Compliance with GMP and 21 CFR Part 11 standards
- Servo-driven motion
- Quick and easy changeover
- Low maintenance costs
- Wide variety of sachet formats available (4-side sealed single sachets, twin sachets, strings...)



02 Technical data

PHV-65		
Maximum reel width	mm	650
Track number		2- 9
Widht range	mm	25- 150
Maxlength*	mm	150
Core reel diameter	mm	150
Max reel diameter	mm	500
Max output	ppm	675
Consumption	kW	5
Air consumption	NI/min	180



PHV-100

Vertical Form-Fill-Seal machine for sachets, operating from a single reel of flexible packaging material, forming the sachets in multiple lanes, filling them with product, and sealing.



01 Machine Highlights

- From 3 to 14 lanes
- Smart HMI, multiple recipes
- Easy access for cleaning and maintenance
- Space to allocate Track & Trace systems, printers, cameras...
- Rejection per independent track for sampling (rejection/ sampling)
- Compliance with GMP and 21 CFR Part 11 standards”
- Servo-driven motion
- Quick and easy changeover
- Low maintenance costs
- Wide variety of sachet formats available (4-side sealed single sachets, twin sachets, strings...)



02 Technical data

PHV-100		
Maximum reel width	mm	1000
Track number		3- 14
Widht range	mm	25- 150
Maxlength*	mm	159
Core reel diameter	mm	150
Max reel diameter	mm	500
Max output	ppm	1050
Consumption	kW	5
Air consumption	NI/min	180



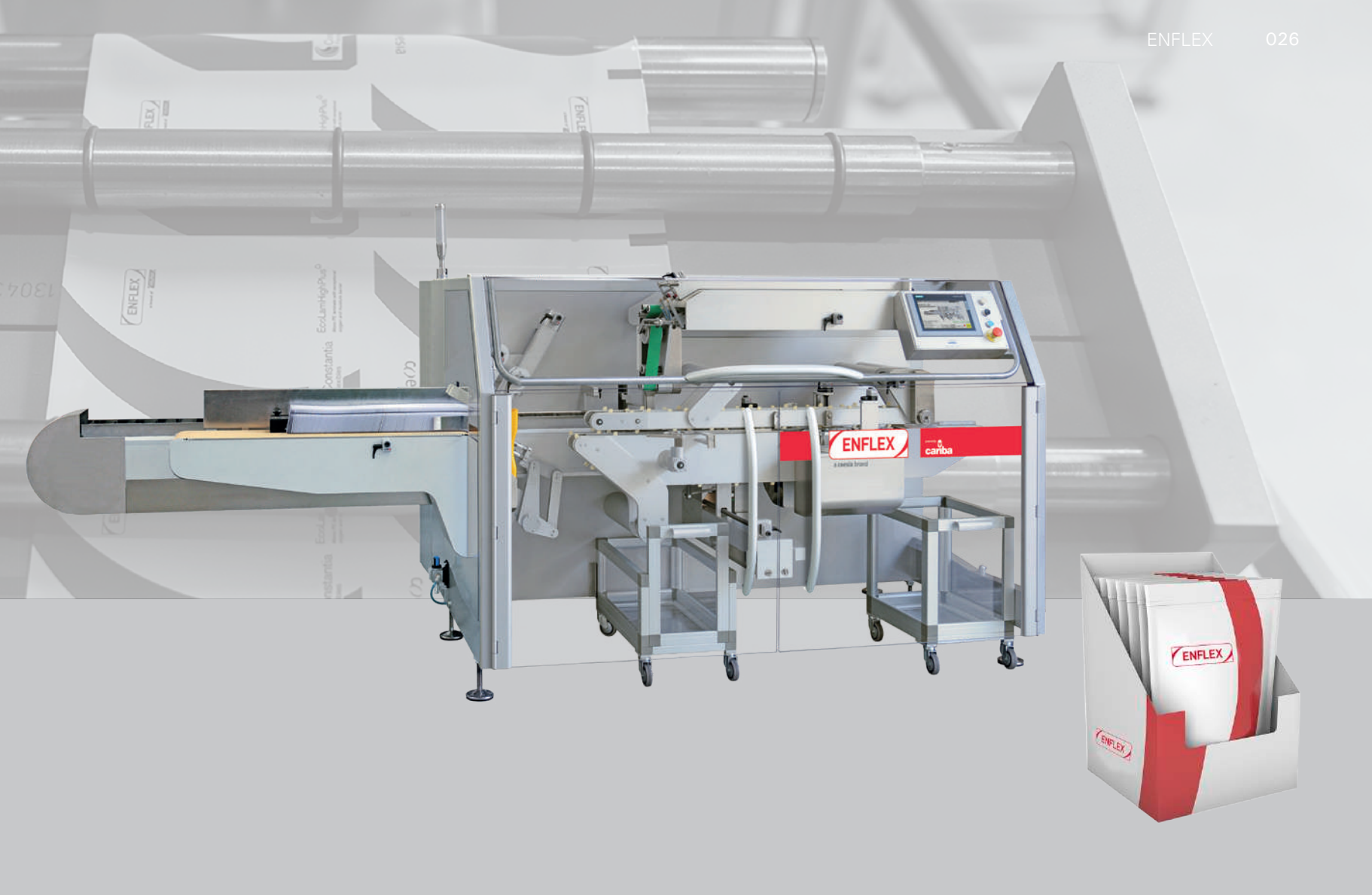
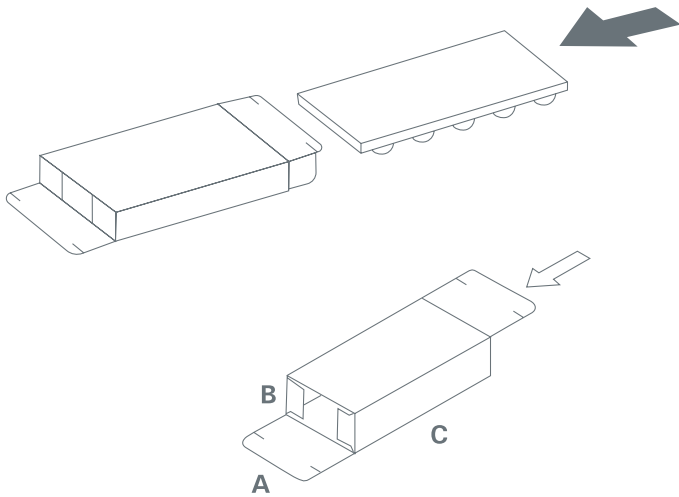


ENFLEX PK SERIES:

**Horizontal Cartoning
machines for complete
packaging lines**

PK-221

Side-load intermittent motion cartoning machine, operating from pre-glued cartons, inserting the product inside laterally, and closing the carton.



01 Machine Highlights

- Feeding systems for sachets, stickpacks...
- Smart HMI
- Balcony style design ensures accessibility, easy cleaning and maintenance
- Neat separation between electrical and mechanical sections
- Space to allocate pre-folded leaflets and booklet dispensers as well as Track & Trace systems, printers, cameras...
- Compliance with GMP and 21 CFR Part 11 standards
- Full servo assisted motions
- Positive carton pick-up/forming
- Quick and easy changeover"
- Pre-glued carton boxes with parallel or alternate flaps. Closures available: tuck-in, hot-melt or combination of tuck-in/hot-melt (i.e. tamper evident).



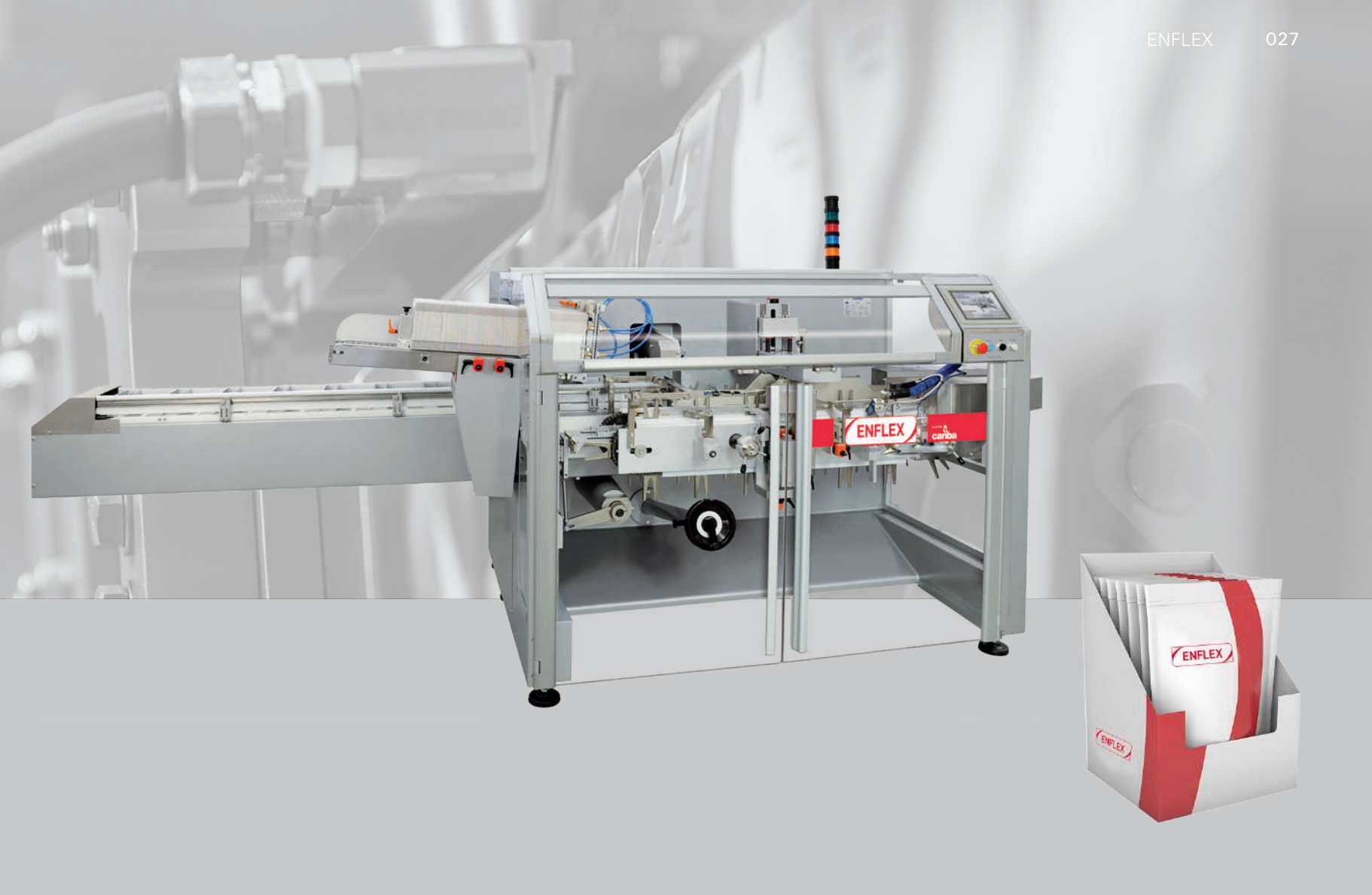
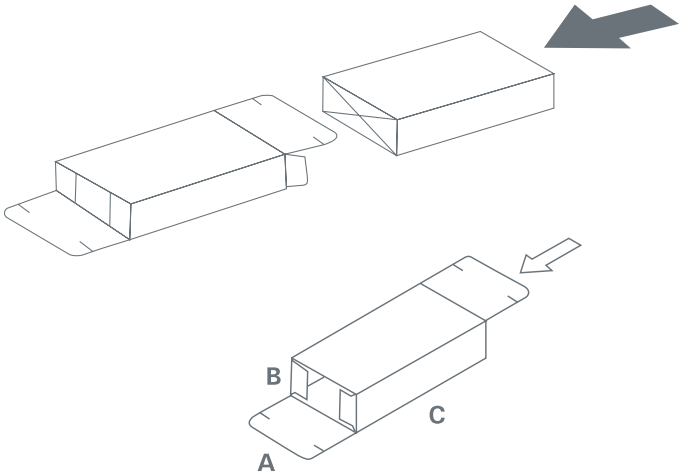
02 Technical data

PK - 221		
Max output	ppm	120
Electric data		230- 400 V / 50 HZ
Installed power (Hot melt closure)	kW	8
Installed power (Tuck-in closure)	kW	3
Air consumption	NI/min	200
Changeover time	min	15
Approx. weight	kg	1450
A	mm	15- 120
B	mm	15- 90
C	min	60- 210



PK-222

Side-load intermittent motion cartoning machine, operating from pre-glued cartons, inserting the product inside laterally, and closing the carton.



01 Machine Highlights

- Feeding systems for sachets, stickpacks...
- Smart HMI
- Balcony style design ensues accessibility, easy cleaning and maintenance
- Neat separation between electrical and mechanical sections
- Space to allocate pre-folded leaflets and booklet dispensers as well as Track & Trace systems, printers, cameras...
- Compliance with GMP and 21 CFR Part 11 standards
- Full servo assisted motions
- Positive carton pick-up/forming
- Quick and easy changeover
- Pre-glued carton boxes with parallel or alternate flaps. Closures available: tuck-in, hot-melt or combination of tuck-in/hot-melt (i.e. tamper evident).



02 Technical data

PK - 222		
Max output	ppm	85- 90
Electric data		230- 400 V / 50 HZ
Installed power (Hot melt closure)	kW	8
Installed power (Tuck-in closure)	kW	3
Air consumption	NI/min	200
Changeover time	min	15
Approx. weight	kg	1450
A	mm	15- 150
B	mm	15- 90
C	min	60- 250



DIGITAL & SERVICES



COESIA DIGITAL:

The future has never been so human

Volpak and **Enflex** are focusing on the development of digital solutions that support people to do their job better and more easily, each and every day.

(optimize)

OptiMate is our proprietary smart HMI developed to facilitate the machine interaction and accelerate operations such as format change, troubleshooting, maintenance by enabling access to guided procedures and digital documentation directly on the machine.

(performate)

PerforMate is Coesia's IoT platform for real-time machine monitoring allowing manufact improve the control and performance of the entire machine pool, while acting as a single en to several innovative services.

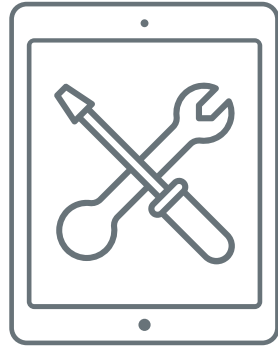
(ultimate)

UltiMate is our advanced software platform for artificial intelligence and machine learning designed to enhance productivity, quality and maintenance, lowering waste and optimizing total cost of ownership.

(hypermate)

HyperMate is Coesia's end-to-end solution for Manufacturing Operations Management aimed at achieving complete digitalization of production processes. Thanks to its ability to adapt to customer processes, HyperMate improves operations by scaling automation to the factory level.





Remote Assistance

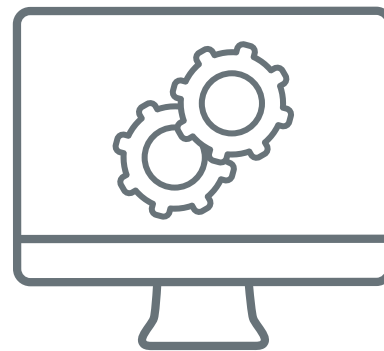


OEE Consulting

**OUR
CUSTOMERS
AT THE
CENTER**



Service Agreements



Webshop

CUSTOMERS FIRST: Volpak customer service

For us, Customer Service means ensuring proactive and continuous support- leveraging our global presence- in a fast, simple and flexible way manner, to guarantee the best possible Overall Equipment Effectiveness (OEE) and the lowest Total Cost of Ownership (TCO) for all Volpak and Enflex machines.

We offer a comprehensive portfolio of services for full equipment lifecycle management striving to keep up the pace with an evolving world.

Webshop

Webshop is our online platform to manage and monitor spare parts orders quickly and efficiently. Clear graphical interface, photographic catalog and the possibility to search and select components in different ways make Volpak's webshop extremely intuitive and easy to use.

Remote Assistance

Thanks to advanced remote connectivity and collaboration tools, video and augmented reality, Volpak is able to provide remote technical support and diagnosis in real time.

Machine Assessment

Machine Assessment is our service to identify and implement solutions that improve performances and contain costs. It is based on inspections performed by qualified Volpak technicians who evaluates the machine status and collects all the data to provide suggestions for tailored interventions:

- part replacement and machine upgrades
- technical assistance and maintenance
- tailored training

Service Agreements

A suite of structured services that may be customized based on customer needs to optimize maintenance, ensure the best possible conditions of use and maximum productivity.

Training / E-training

Obtain the maximum performance of your machine by taking advantage of our Training Services to secure and develop your team competence and capability.

POUCH LAB:

Our approach to sustainability

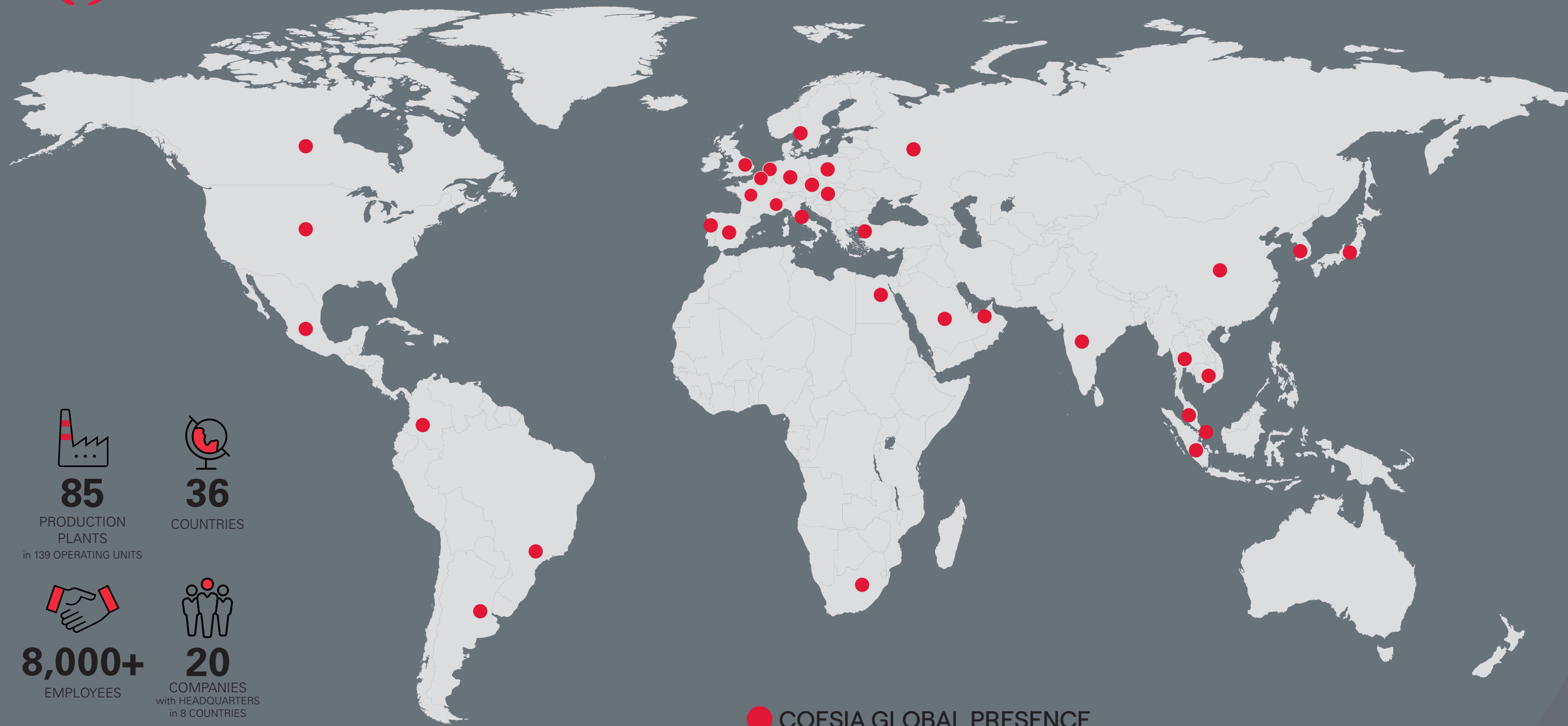
At Enflex, not only do we design packaging machines ready-to-work with sustainable materials, but we also work close to our customers to find more environmentally friendly packaging materials.


In our PouchLab laboratory, our customers can test the behavior of the different materials in a real production environment.





coesia




85
PRODUCTION
PLANTS
in 139 OPERATING UNITS


36
COUNTRIES


8,000+
EMPLOYEES


20
COMPANIES
with HEADQUARTERS
in 8 COUNTRIES

Volpak S.A.U
Pol. Ind. Can Vinyalets
C/ Can Vinyalets 4
08130 Santa Perpètua de Mogoda
Barcelona, Spain

main@enflex.es
www.enflex.es

Enflex, part of Volpak, is a Coesia brand of horizontal Form-Fill-Seal and vertical multi-lane packaging lines specialising in the healthcare sector. Enflex designs and manufactures a wide range of sachet and stick pack machines for the packaging of pharmaceutical, nutraceutical, and personal care products, as well as medical swab sticks and hygiene wet wipes.

With over 35 years of experience, the Enflex brand is widely known for proven and reliable technology as well as ease of use and low maintenance need.

Enflex and Volpak are part of Coesia, a group of industrial and packaging solutions companies operating globally, headquartered in Bologna, Italy.



